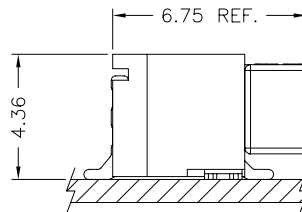


Specifications

Current Rating: 0.5A~1A AC,DC(Per Pin)
Voltage Rating: 50V AC,DC(Per Pin)
Temperature Range: -25°C ~ +85°C
Contact Resistance: 20mΩ Max.
Insulation Resistance: 100MΩ Min.
Withstanding Voltage: 500V AC/minute

Standards

Assembly Layout



Ordering Code

① ② ③ ④
A1013 - X X X

- ① Series No.
- ② Plating Code: G=Gold-Plated
- ③ Material: P=Phosphor Bronze
- ④ E=Stamping Before Plating

① ② ③ ④
A1013 X - 2X NP

Series No.
Housing Type: H=Housing
2X=Dual Row
No. of Circuits

① ② ③ ④ ⑤ ⑥
A1013 XX X - X - 2X NP

- ① Series No.
- ② Connector Type: WR=Right Angle
- ③ A=A Type
- ④ Mounting Type: S=SMT
- ⑤ 2X=Dual Row
- ⑥ No. of Circuits



A1013 SERIES

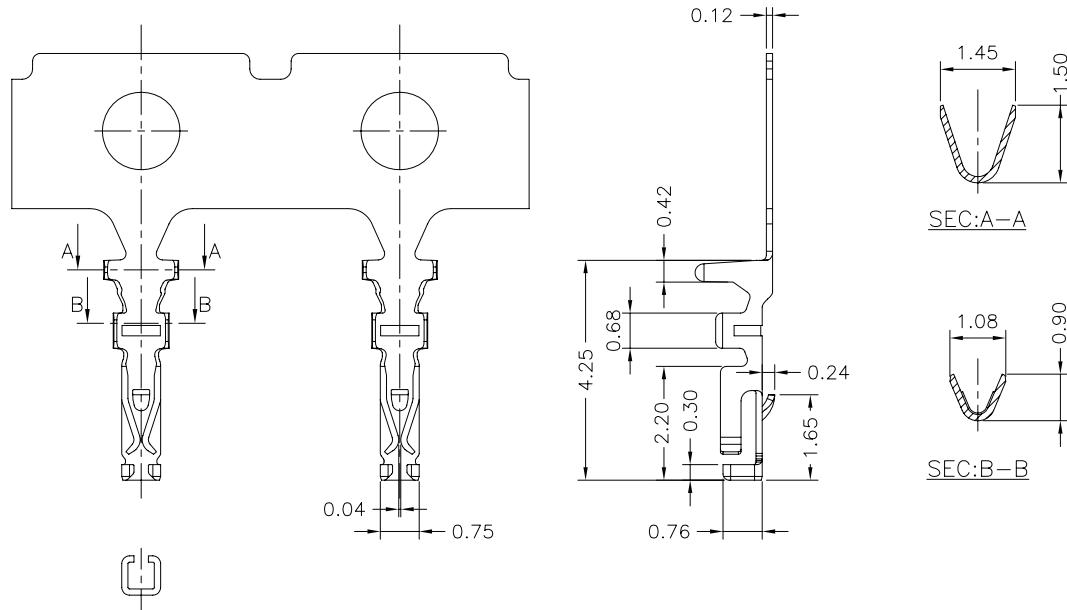
1.00mm Pitch Wire to Board Connector

A1013-XXX

1.00mm Pitch Crimp Terminal

Reference Information:

*Used in A1013 Series Housing



Ordering Information & Specifications:

Unit:mm

Part No.	Wire Range	Insulation O.D.	Material	Finish	Qty/Reel
A1013-GPE	AWG#28-#32	0.80mm(Max)	Phosphor Bronze	Gold-Plated	15,000Pcs

Note:E-Stamping Before Plating

A1013H-2

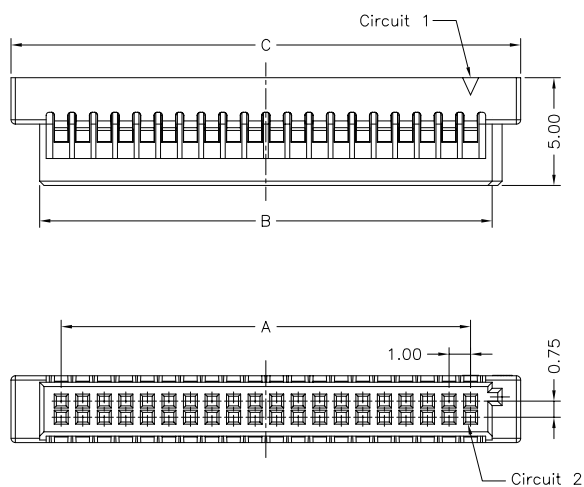
1.00mm Pitch Dual Row Housing

Reference Information:

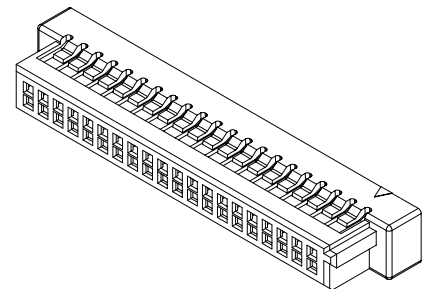
*Material: Thermoplastic

*Suitable A1013 Series Terminal

*Mates with A1013 Series Dual Row Wafer



A1013H-2XNP	X	X	X	XX	X	XX	X
	①	②	③	④	⑤	⑥	⑦
①	Halogen Free or Not						
②	Material						
③	Color						
④	Plating Code for Contacts						
⑤	Plating Code						
⑥	Option Code						
⑦	Packing Code						



Dimensions:

Circuit No.	Dimensions		
	A	B	C
2X15	14.00	16.00	18.65
2X20	19.00	21.00	23.65

Unit:mm



A1013 SERIES

1.00mm Pitch Wire to Board Connector

A1013WRA-S-2

1.00mm Pitch 90° Dual Row Wafer- SMT Type

Reference Information:

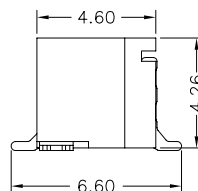
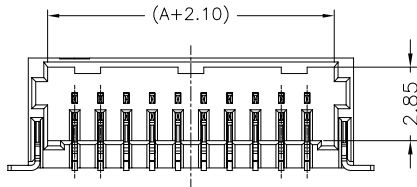
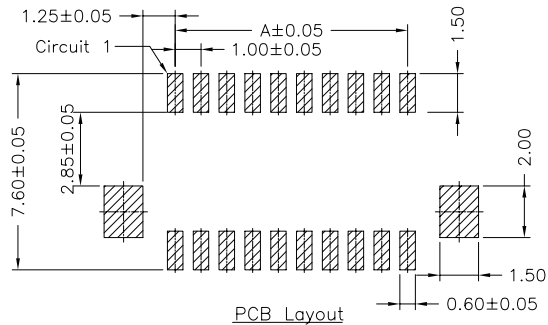
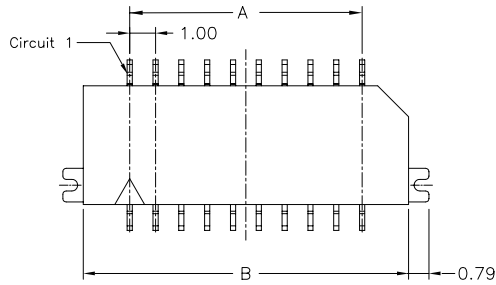
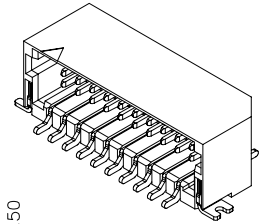
*Material: Pin: Copper Alloy

Solder Tabs: Copper Alloy

Wafer: Thermoplastic

*Mates with A1013 Series Dual Row Housing

A1013WRA-S-2XNP	X	X	X	XX	X	XX	X
①	②	③	④	⑤	⑥	⑦	
①	Halogen Free or Not						
②	Material						
③	Color						
④	Plating Code for Contacts						
⑤	Plating Code						
⑥	Option Code						
⑦	Packing Code						



Dimensions:

Circuit No.	Dimensions	
	A	B
2X10	9.00	12.60
2X15	14.00	17.60
2X20	19.00	22.60

Unit:mm